

# State of Wyoming Corner Record

(in compliance with the CORNER PERPETUATION AND FILING ACT, Wyoming Statutes, 1977, Section 36-11-101, et. seq., and the Rules and Regulations of the Board of Registration for Professional Engineers and Professional Land Surveyors)

Reverse side of this form may be used if more space is needed.

Record of original survey and citation of source of historical information (if corner is lost or obliterated). Description of corner monumentation evidence found and/or monument and accessories established to perpetuate the location of this corner. Sketch of relative location of monument, accessories, and reference points with course and distance to adjacent corner(s) (if determined in this survey). Method and rationale for reestablishment of lost or obliterated corn

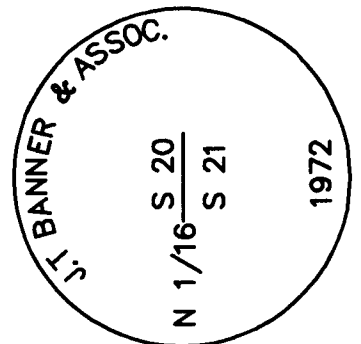
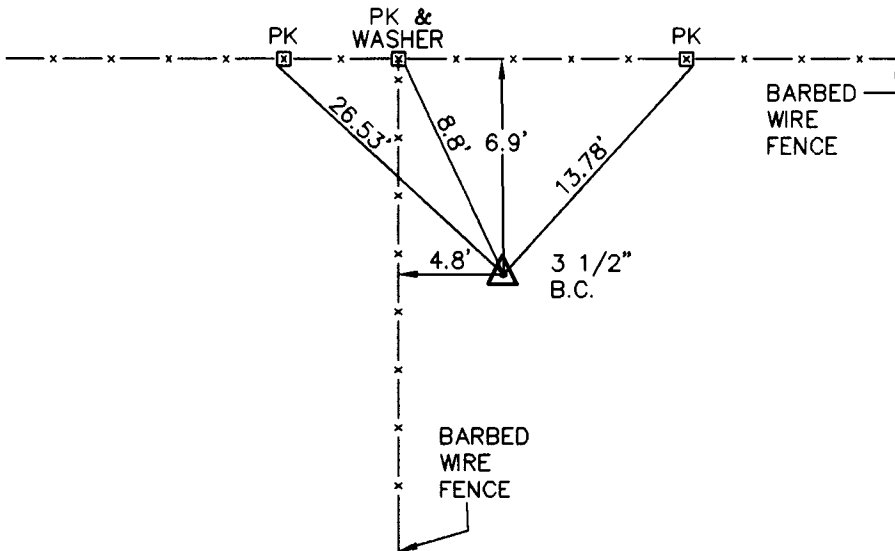
GLO RECORD: NONE

MONUMENT FOUND: FOUND A 3 1/2" BRASS CAP MARKED AS SHOWN. MONUMENT FALLS 2.15' SOUTH & 4.84' WEST OF TRUE POSITION.

MONUMENT SET: NONE

REFERENCES SHOWN BELOW.

LARAMIE COUNTY CLERK  
CHEYENNE, WY.  
'96 FEB 15 AM 9 21  
**177394**



Date of Field Work: 4-24-95 Office Reference: 95086

Firm/Agency, Address

**STEIL SURVEYING SERVICES, LLC**  
1102 WEST 19th STREET  
CHEYENNE WY 82001

Telephone Number: (307) 634-7273

This corner record was prepared by me or under my direction and supervision.  
SEAL & SIGNATURE



CROSS INDEX DIAGRAM

A	2	3	4	5	6	7	8	9	10	11	12	13	14	15	16	17	18	19	20	21	22	23	24	25	
B																									
C	6		5		4		3		2																
D																									
E																									
F																									
G	7		8		9		10		11		12														
H																									
J																									
K																									
L	18		17		16		15		14		13														
M																									
N																									
O																									
P	19		20		21		22		23		24														
Q																									
R																									
S																									
T	30		29		28		27		26		25														
U																									
V																									
W																									
X	31		32		33		34		35		36														
Y																									
Z																									

**BOOK 1417**

Corner Name: NORTH 1/16 CORNER Section: 20|21|14N R 70W 6th P.M. Cross-Index No.: 0-9  
SBRPEPLS/PLSW: March 1994